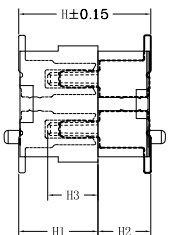
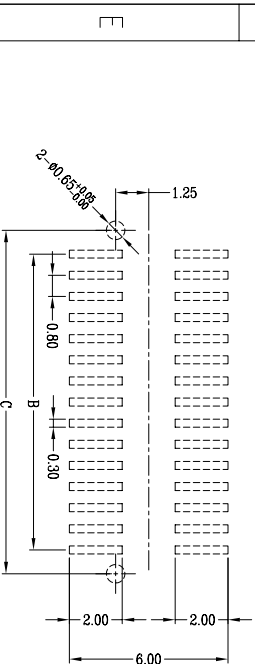
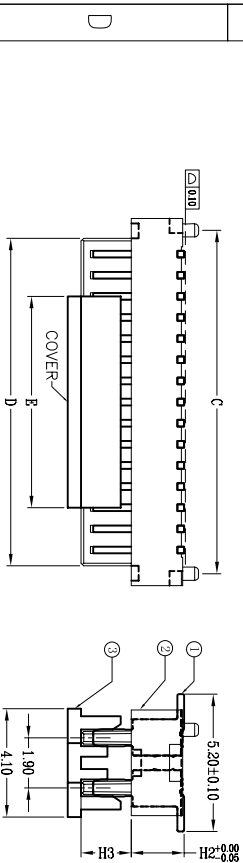
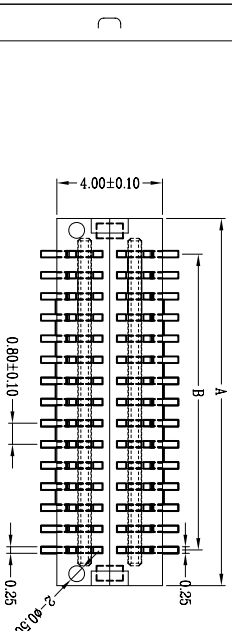


1	2	3	4
High photosynthesis (H)	The female seat height (H1)	The male seat height (H2)	Insertion height (H3)
4.0	3.0	1.0	1.9
4.5	3.5	1.0	1.9
5.0	3.0/4.0	2.0/1.0	1.9
5.5	3.5/4.5	2.0/1.0	1.9
6.0	4.0	2.0	1.9
6.5	4.5	2.0	1.9
7.0	3.0	4.0	1.9
7.5	3.5	4.0	1.9
8.0	4.0	4.0	1.9
8.5	4.5	4.0	1.9



ASSEMBLY



P.B.C LAYOUT

No.	品名	数量	材料	表面处理	备注
1	端子	PIN数	C5191 H	全全Flash 0.6U"	
2	本体	1	PANT 黑色		
3	CAP	1	PANT 黑色		

5	6	7	8
REV	ECN	DESCRIPTION	MDP'D
1.0	/	新发行	fan Z. J.
			DATE
			2021-07-08

NO. of Contacts	Dimension (mm)					8.00
	A±0.10	B±0.10	C±0.10	D±0.10	E±0.10	
6	4.30	1.60	3.40	2.60		
8	5.10	2.40	4.20	3.40		
10	5.90	3.20	5.00	4.20		
12	6.70	4.00	5.80	5.00		
14	7.50	4.80	6.60	5.80		
16	8.30	5.60	7.40	6.60		
18	9.10	6.40	8.20	7.40		
20	9.90	7.20	9.00	8.20		
22	10.70	8.00	9.80	9.00	4.00	
24	11.50	8.80	10.60	9.80		
26	12.30	9.60	11.40	10.60		
28	13.10	10.40	12.20	11.40		
30	13.90	11.20	13.00	12.20		
32	14.70	12.00	13.80	13.00		
34	15.50	12.80	14.60	13.80		
36	16.30	13.60	15.40	14.60		
38	17.10	14.40	16.20	15.40		
40	17.90	15.20	17.00	16.20		
42	18.70	16.00	17.80	17.00		
44	19.50	16.80	18.60	17.80		
46	20.30	17.60	19.40	18.60		
48	21.10	18.40	20.20	19.40		
50	21.90	19.20	21.00	20.20		
52	22.70	20.00	21.80	20.80		
54	23.50	20.80	22.60	21.80		
56	24.30	21.60	23.40	22.60		
58	25.10	22.40	24.20	23.40		
60	25.90	23.20	25.00	24.20		
62	26.70	24.00	25.80	25.00		
64	27.50	24.80	26.60	25.80		
66	28.30	25.60	27.40	26.60		
68	29.10	26.40	28.20	27.40		
70	29.90	27.20	29.00	28.20		
72	30.70	28.00	29.80	29.00		
74	31.50	28.80	30.60	29.80		
76	32.30	29.60	31.40	30.60		
78	33.10	30.40	32.20	31.40		
80	33.90	31.20	33.00	32.20		
82	34.70	32.00	33.80	33.00		
84	35.50	32.80	34.60	33.80		
86	36.30	33.60	35.40	34.60		
88	37.10	34.40	36.20	35.40		
90	37.90	35.20	37.00	36.20		
92	38.70	36.00	37.80	37.00		
94	39.50	36.80	38.60	37.80		
96	40.30	37.60	39.40	38.60		
98	41.10	38.40	40.20	39.40		
100	41.90	39.20	41.00	40.20		

5001-BTB 0810-**MR

PACKING: R: REEL
 PIN MALE
 MAT INGHIGHT: 10-1.0H: 20-2.0H
 40-4.0H.

0.88BTB
 JM CONN BTB CONNECTOR SERIES

深圳市文章济美科技有限公司

Part Name: B T B 0.88双排 公头

Part No.: 5001-BTB0810-**MR

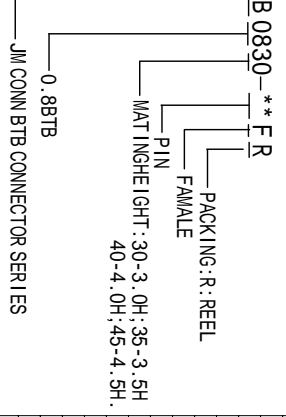
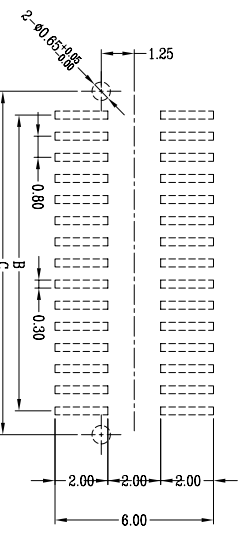
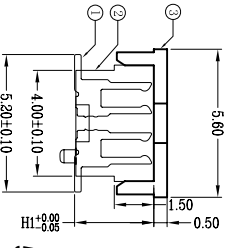
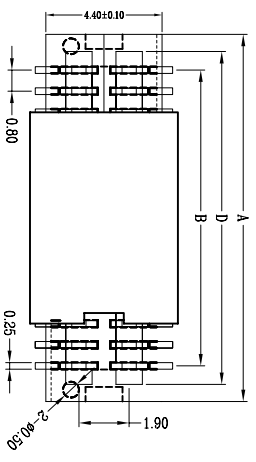
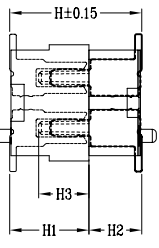
Checked: Drawn: Fan Z. J.

Date: 2021-07-08

.X ±0.20	.X° ±1.0°
.XX ±0.10	.XX° ±0.5°
.XXX ±0.05	.XXX° ±0.2°
SCALE 1:1	UNIT mm
PAGE: 1/1	REV: 1.0

1	2	3	4	5	6	7	8
---	---	---	---	---	---	---	---

1	2	3	4
High photosynthesis (H)	The female seat height (H1)	The male seat height (H2)	Insertion height (H3)
4.0	3.0	1.0	1.9
4.5	3.5	1.0	1.9
5.0	3.0/4.0	2.0/1.0	1.9
5.5	3.5/4.5	2.0/1.0	1.9
6.0	4.0	2.0	1.9
6.5	4.5	2.0	1.9
7.0	3.0	4.0	1.9
7.5	3.5	4.0	1.9
8.0	4.0	4.0	1.9
8.5	4.5	4.0	1.9



NO. of Contacts	Dimension (mm)				
	A±0.10	B±0.10	C±0.10	D±0.10	E±0.10
6	4.30	1.60	3.40	2.66	
8	5.10	2.40	4.20	3.46	
10	5.90	3.20	5.00	4.26	
12	6.70	4.00	5.80	5.06	
14	7.50	4.80	6.60	5.86	
16	8.30	5.60	7.40	6.66	
18	9.10	6.40	8.20	7.46	
20	9.90	7.20	9.00	8.26	
22	10.70	8.00	9.80	9.06	4.00
24	11.50	8.80	10.60	9.86	
26	12.30	9.60	11.40	10.66	
28	13.10	10.40	12.20	11.46	
30	13.90	11.20	13.00	12.26	
32	14.70	12.00	13.80	13.06	
34	15.50	12.80	14.60	13.86	
36	16.30	13.60	15.40	14.66	
38	17.10	14.40	16.20	15.46	
40	17.90	15.20	17.00	16.26	
42	18.70	16.00	17.80	17.06	
44	19.50	16.80	18.60	17.86	
46	20.30	17.60	19.40	18.66	
48	21.10	18.40	20.20	19.46	
50	21.90	19.20	21.00	20.26	
52	22.70	20.00	21.80	20.86	
54	23.50	20.80	22.60	21.86	
56	24.30	21.60	23.40	22.66	
58	25.10	22.40	24.20	23.46	
60	25.90	23.20	25.00	24.26	
62	26.70	24.00	25.80	25.06	
64	27.50	24.80	26.60	25.86	
66	28.30	25.60	27.40	26.66	
68	29.10	26.40	28.20	27.46	
70	29.90	27.20	29.00	28.26	8.00
72	30.70	28.00	29.80	29.06	
74	31.50	28.80	30.60	29.86	
76	32.30	29.60	31.40	30.66	
78	33.10	30.40	32.20	31.46	
80	33.90	31.20	33.00	32.26	
82	34.70	32.00	33.80	33.06	
84	35.50	32.80	34.60	33.86	
86	36.30	33.60	35.40	34.66	
88	37.10	34.40	36.20	35.46	
90	37.90	35.20	37.00	36.26	
92	38.70	36.00	37.80	37.06	
94	39.50	36.80	38.60	37.86	
96	40.30	37.60	39.40	38.66	
98	41.10	38.40	40.20	39.46	
100	41.90	39.20	41.00	40.26	

深圳市文章济美科技有限公司

No.	品名	数量	材料	表面处理	备注
1	端子	PIN数	C5191 H	全全Flash 0.6U"	
2	本体	1	PANT 黑色		
3	CAP	1	PANT 黑色		

PAGE: 1/1	REV: 1.0	Part Name: B T B 0.83双排 母座	Approved:
SCALE 1:1	UNIT mm	Part No.: 5001-BTB0830-**-FR	Checked:
Drawing No.: G8BTC00003	Mode NO.:	Title:	Drawn: Fan Z. J.
			Date: 2021-07-08