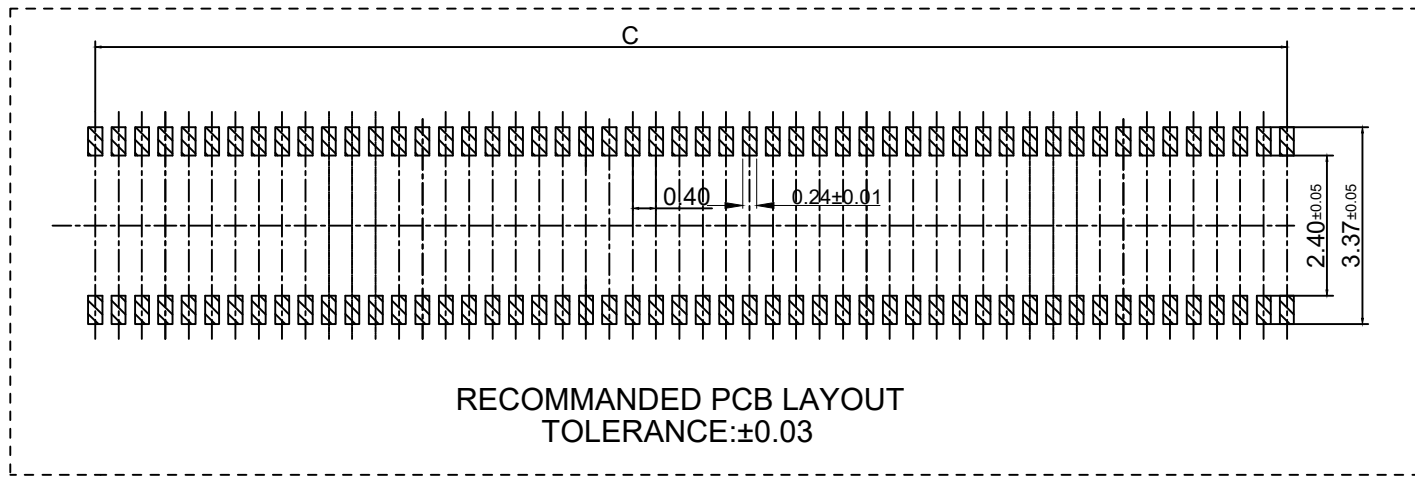
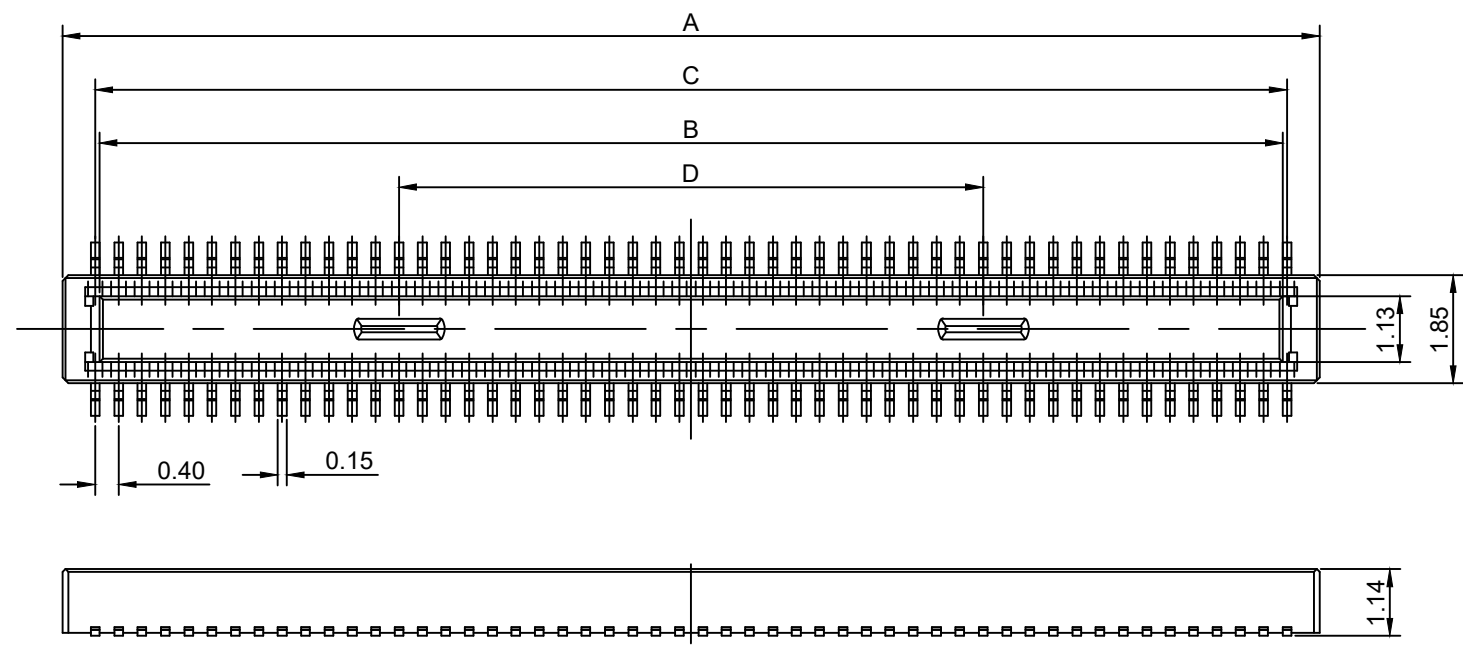


REV.	ECN No.	DATE
c	ED-1108-003	2023.02.10



5001 BM 04 *** 15 **

Company
 BTB Conn:Male
 Series
 Position Number:***Pin
 Mate Height:1.5mm
 Plating

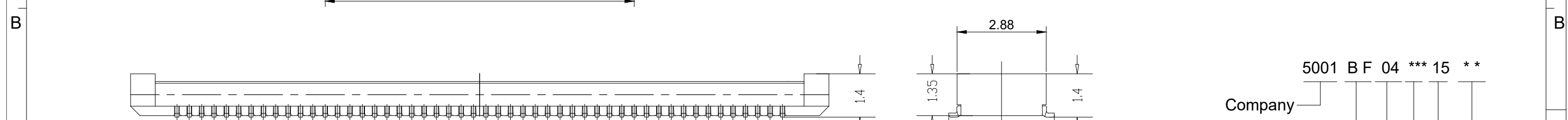
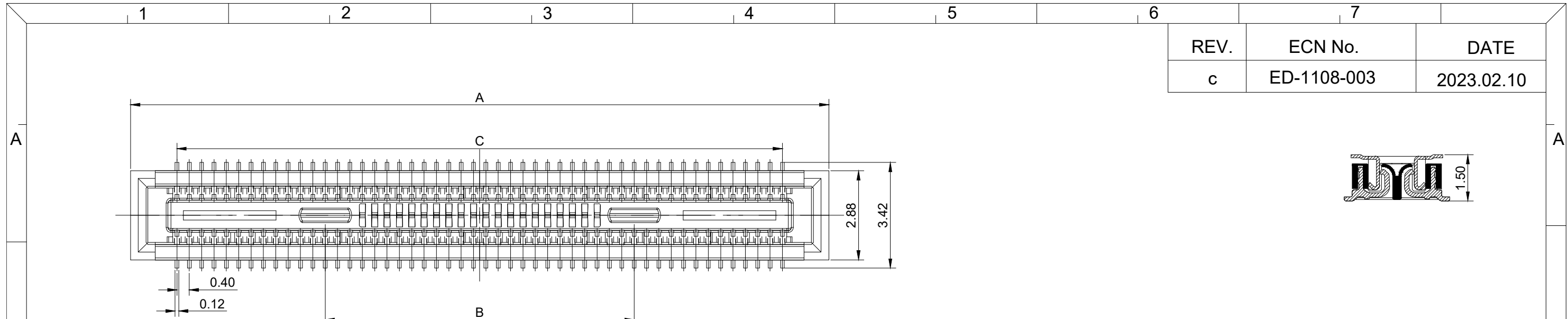
PIN	10	12	20	24	30	34	40	44	50	60	70	80	90	100	120
A	3.52	3.92	5.52	6.32	7.52	8.32	9.52	10.32	11.52	13.52	15.52	17.52	19.52	21.52	25.52
B	2.26	2.66	4.26	5.06	6.26	7.06	8.26	9.06	10.26	12.26	14.26	16.26	18.26	20.26	24.26
C	2.40	3.20	4.40	5.20	6.40	7.20	8.40	9.20	10.40	12.40	14.40	16.40	18.40	20.40	24.40
D	-	-	1.93	2.43	3.18	3.68	5.08	5.86	5.50	6.00	7.00	8.00	9.00	10.00	14.00

- NOTES -
- MATERIAL SEE TABLE;
 - ELECTRICAL PERFORMANCES:
 - RATED CURRENT:0.5A;
 - CONTACT RESISTANCE: 90 mQ Max. with AC 20mV, 1kHz and 1mA.;
 - INSULATION RESISTANCE: 50MQ min. with DC 100v.;
 - WITHSTANDING VOLTAGE: 100 VAC FOR 1 MINUTE MIN.;
 - MECHANICAL PERFORMANCES:
 - DURABILITY:30 CYCLES;
 - OPERATION TEMPERATURE:-35° TO +85°;
 - NORMAL INSERT FORCE AT MATED POSITION:5N MAX;

2	Housing	1	LCP	Glass:30%	Black
1	Terminal	N	C5191H	Ni 50~90u"UNDERPLATING, GOLD FLASH OVER ALL	
ITEM	Part Name	Q'TY	MATERIAL	FINISH	REMARK

TOLERANCE UNLESS SPECIFIED		UNITS: mm	NAME(INTENDED USE)	深圳市文章济美科技有限公司	
LINEAR	ANGLE	MAT'L: SEE NOTES	0.4MM BTB 1.5H Male Conn	TITLE:	
.X ± 0.25	X° XX	FINISH: SEE NOTES	PART NO.(INTENDED USE)	0.4MM BTB 1.5H Male Conn	
.XX ± 0.15	.X° XX	Weight:	BM04**150*	Customer Drawing	
.XXX ± 0.10	.XX° XX		APPD:	DWG NO.:	
			CHKD:	5001BM04001510-C	
			DR: F Pan	SCALE	SHEET
				5:1	1/1
				REV.	A

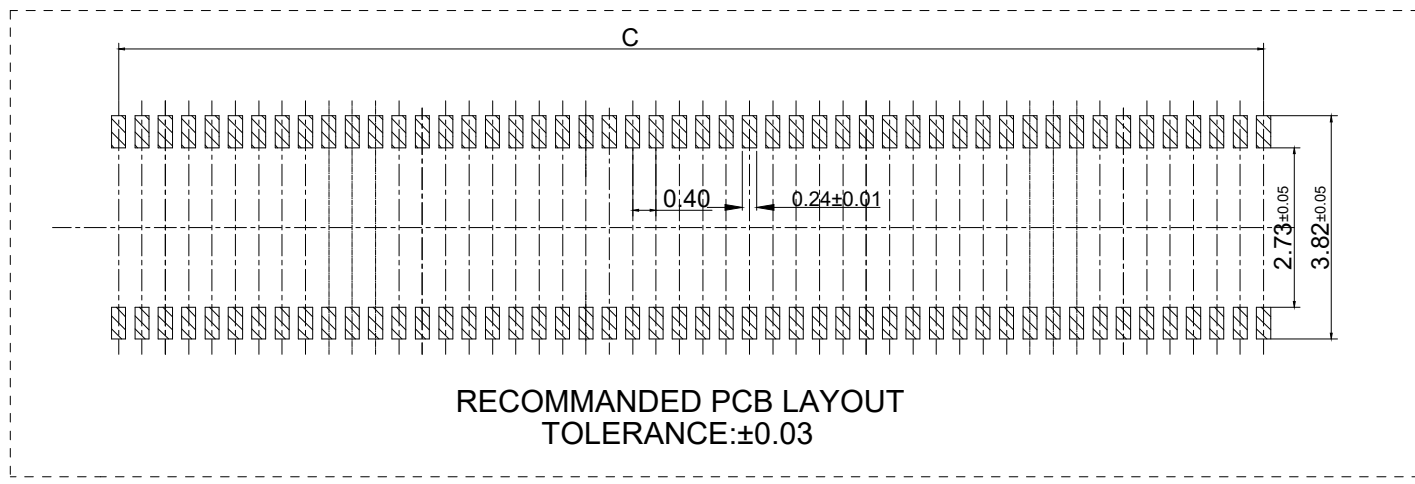
REV.	ECN No.	DATE
c	ED-1108-003	2023.02.10



5001 B F 04 *** 15 **

Company
 BTB Conn:Female
 Series
 Position Number:***Pin
 Mate Height:1.5mm
 Plating

- NOTES -
- MATERIAL SEE TABLE;
 - ELECTRICAL PERFORMANCES:
 - 2-1.RATED CURRENT:0.5A;
 - 2-2.CONTACT RESISTANCE: 90 mQ Max. with AC 20mV, 1kHz and 1mA
 - 2-3.INSULATION RESISTANCE: 50MQ min. with DC 100v
 - MECHANICAL PERFORMANCES:
 - 3-1.DURABILITY:30 CYCLES;
 - 3-2.OPERATION TEMPERATURE:-35° TO +85°;

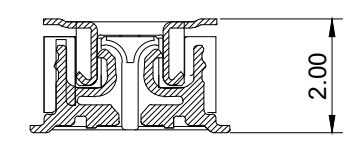
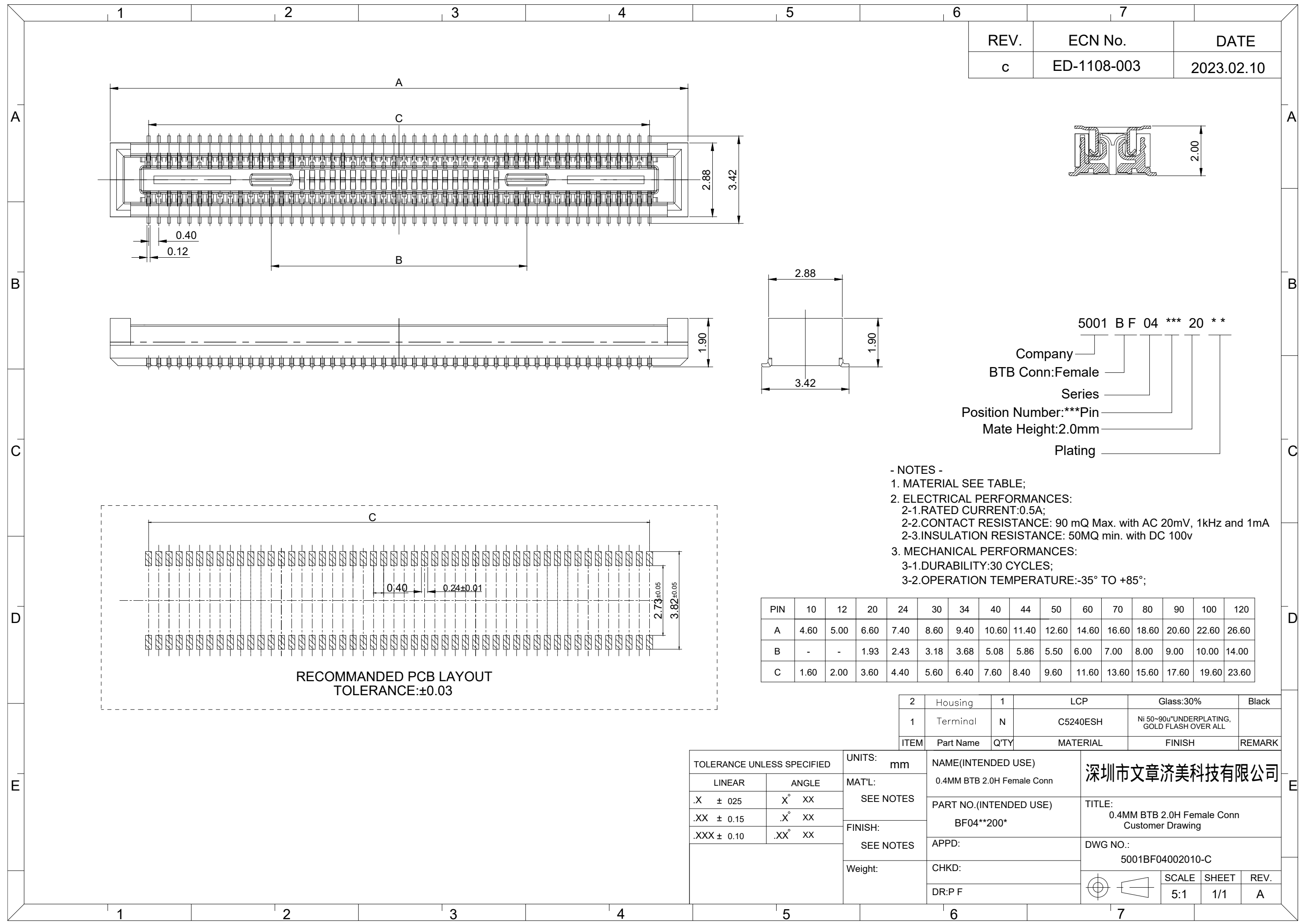


PIN	10	12	20	24	30	34	40	44	50	60	70	80	90	100	120
A	4.60	5.00	6.60	7.40	8.60	9.40	10.60	11.40	12.60	14.60	16.60	18.60	20.60	22.60	26.60
B	-	-	1.93	2.43	3.18	3.68	5.08	5.86	5.50	6.00	7.00	8.00	9.00	10.00	14.00
C	1.60	2.00	3.60	4.40	5.60	6.40	7.60	8.40	9.60	11.60	13.60	15.60	17.60	19.60	23.60

2	Housing	1	LCP	Glass:30%	Black
1	Terminal	N	C5240ESH	Ni 50~90u"UNDERPLATING, GOLD FLASH OVER ALL	
ITEM	Part Name	Q'TY	MATERIAL	FINISH	REMARK

TOLERANCE UNLESS SPECIFIED		UNITS: mm	NAME(INTENDED USE)	深圳市文章济美科技有限公司		
LINEAR	ANGLE	MAT'L:	0.4MM BTB 1.5H Female Conn			
.X ± 0.25	X° XX	SEE NOTES	PART NO.(INTENDED USE)	TITLE:		
.XX ± 0.15	.X° XX	FINISH:	BF04**150*	0.4MM BTB 1.5H Female Conn		
.XXX ± 0.10	.XX° XX	SEE NOTES	APPD:	Customer Drawing		
		Weight:	CHKD:	DWG NO.:		
			DR:P F	5001BF04001510-C		
				SCALE	SHEET	REV.
				5:1	1/1	A

REV.	ECN No.	DATE
c	ED-1108-003	2023.02.10



5001 B F 04 *** 20 **

Company
 BTB Conn:Female
 Series
 Position Number:***Pin
 Mate Height:2.0mm
 Plating

- NOTES -
1. MATERIAL SEE TABLE;
 2. ELECTRICAL PERFORMANCES:
 - 2-1.RATED CURRENT:0.5A;
 - 2-2.CONTACT RESISTANCE: 90 mQ Max. with AC 20mV, 1kHz and 1mA
 - 2-3.INSULATION RESISTANCE: 50MQ min. with DC 100v
 3. MECHANICAL PERFORMANCES:
 - 3-1.DURABILITY:30 CYCLES;
 - 3-2.OPERATION TEMPERATURE:-35° TO +85°;

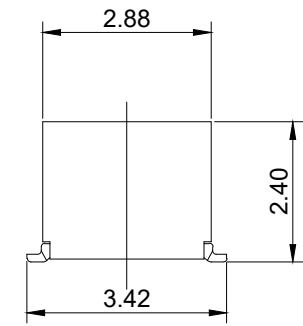
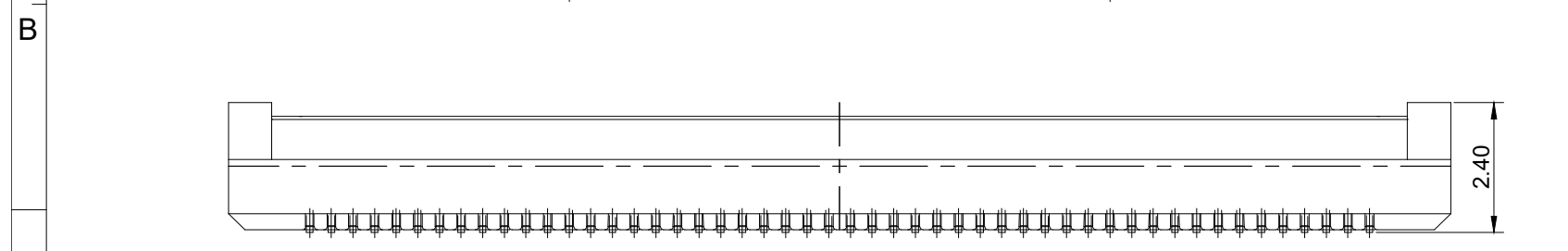
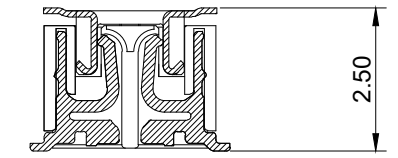
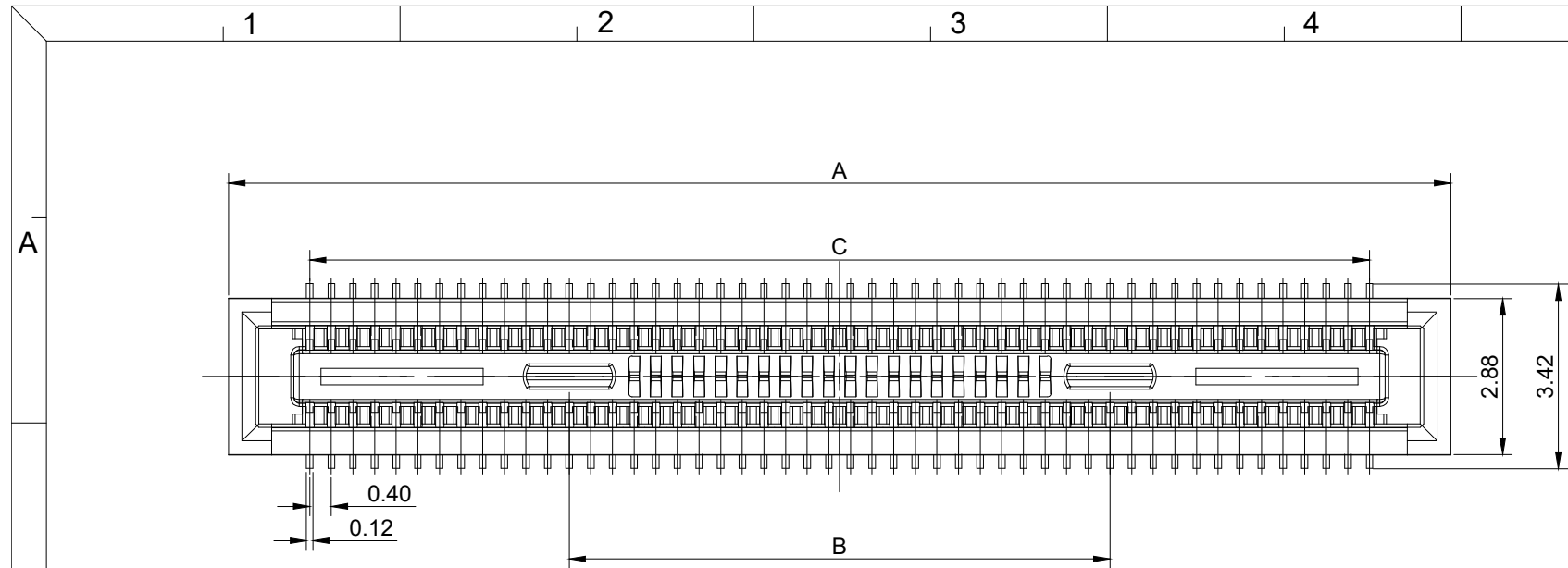
PIN	10	12	20	24	30	34	40	44	50	60	70	80	90	100	120
A	4.60	5.00	6.60	7.40	8.60	9.40	10.60	11.40	12.60	14.60	16.60	18.60	20.60	22.60	26.60
B	-	-	1.93	2.43	3.18	3.68	5.08	5.86	5.50	6.00	7.00	8.00	9.00	10.00	14.00
C	1.60	2.00	3.60	4.40	5.60	6.40	7.60	8.40	9.60	11.60	13.60	15.60	17.60	19.60	23.60

2	Housing	1	LCP	Glass:30%	Black
1	Terminal	N	C5240ESH	Ni 50~90u"UNDERPLATING, GOLD FLASH OVER ALL	
ITEM	Part Name	Q'TY	MATERIAL	FINISH	REMARK

TOLERANCE UNLESS SPECIFIED		UNITS: mm	NAME(INTENDED USE)	深圳市文章济美科技有限公司		
LINEAR	ANGLE	MAT'L:	0.4MM BTB 2.0H Female Conn			
.X ± 0.25	X° XX	SEE NOTES	PART NO.(INTENDED USE)	TITLE:		
.XX ± 0.15	.X° XX	FINISH:	BF04**200*	0.4MM BTB 2.0H Female Conn		
.XXX ± 0.10	.XX° XX	SEE NOTES	APPD:	Customer Drawing		
		Weight:	CHKD:	DWG NO.:		
			DR:P F	5001BF04002010-C		
				SCALE	SHEET	REV.
				5:1	1/1	A

RECOMMENDED PCB LAYOUT
 TOLERANCE:±0.03

REV.	ECN No.	DATE
c	ED-1108-003	2023.02.10

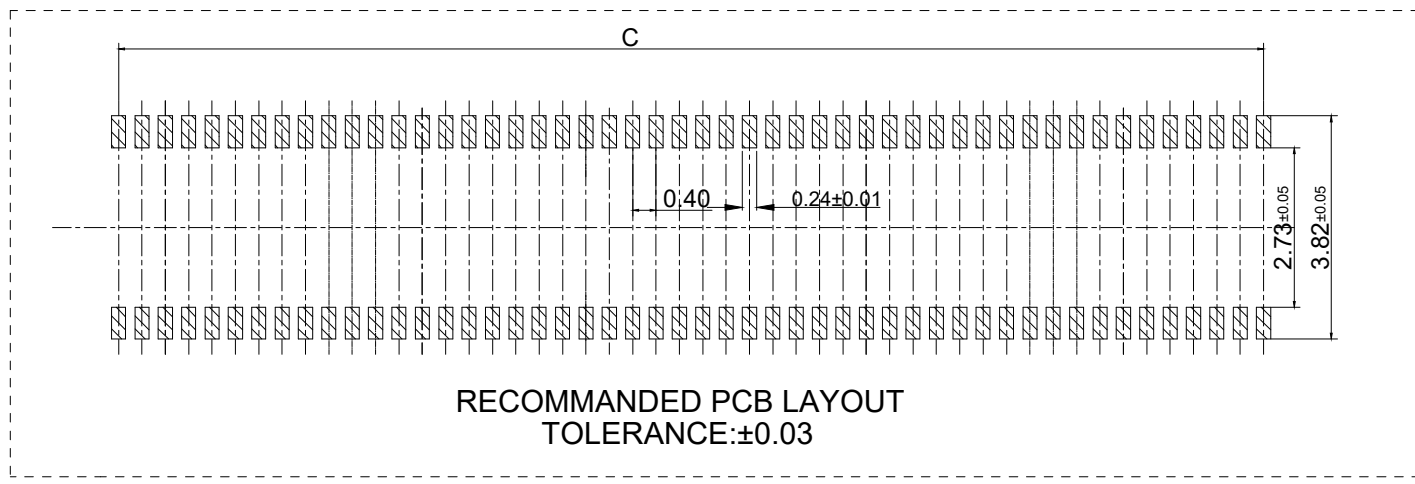


5001 B F 04 *** 25 **

Company
 BTB Conn:Female
 Series
 Position Number:***Pin
 Mate Height:2.5mm
 Plating

- NOTES -

1. MATERIAL SEE TABLE;
2. ELECTRICAL PERFORMANCES:
 - 2-1.RATED CURRENT:0.5A;
 - 2-2.CONTACT RESISTANCE: 90 mQ Max. with AC 20mV, 1kHz and 1mA
 - 2-3.INSULATION RESISTANCE: 50MQ min. with DC 100v
3. MECHANICAL PERFORMANCES:
 - 3-1.DURABILITY:30 CYCLES;
 - 3-2.OPERATION TEMPERATURE:-35° TO +85°;

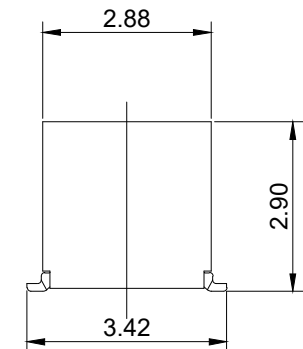
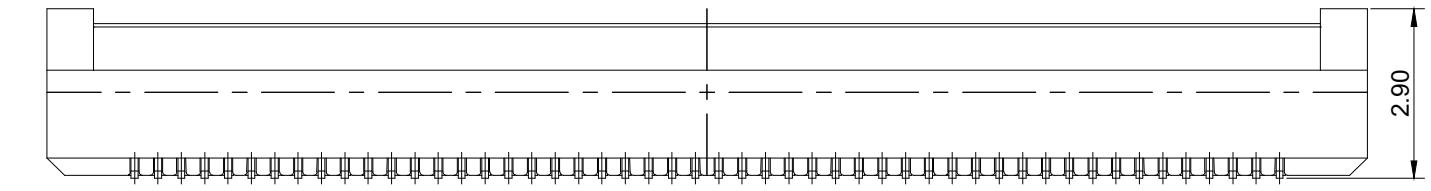
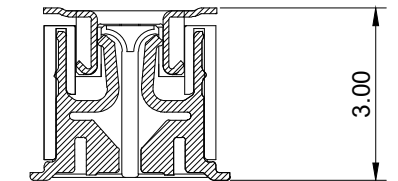
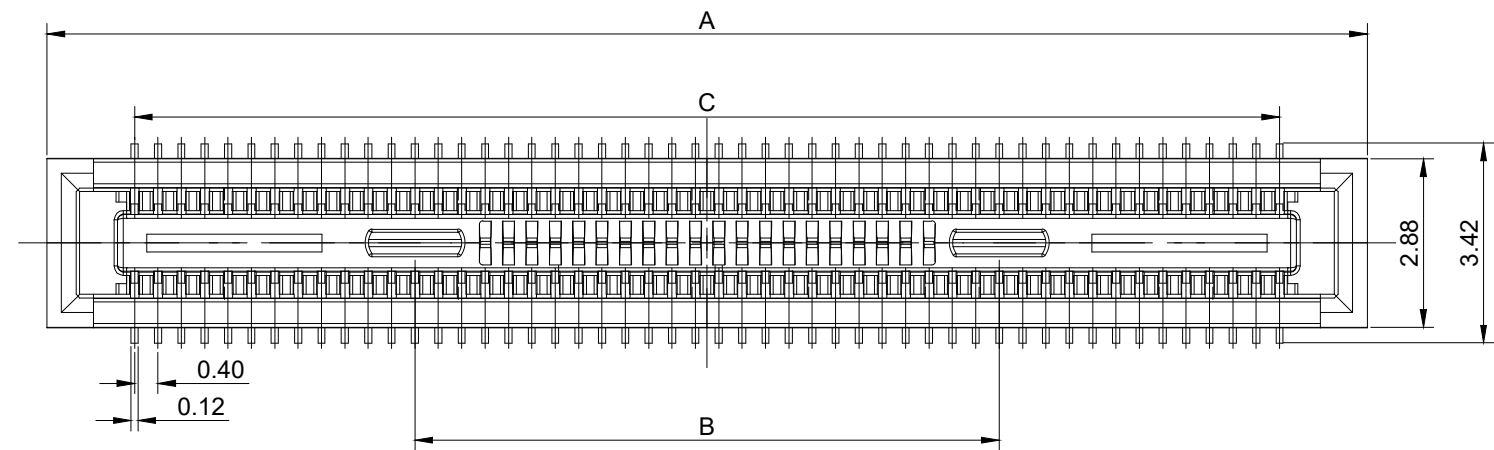


PIN	10	12	20	24	30	34	40	44	50	60	70	80	90	100	120
A	4.60	5.00	6.60	7.40	8.60	9.40	10.60	11.40	12.60	14.60	16.60	18.60	20.60	22.60	26.60
B	-	-	1.93	2.43	3.18	3.68	5.08	5.86	5.50	6.00	7.00	8.00	9.00	10.00	14.00
C	1.60	2.00	3.60	4.40	5.60	6.40	7.60	8.40	9.60	11.60	13.60	15.60	17.60	19.60	23.60

2	Housing	1	LCP	Glass:30%	Black
1	Terminal	N	C5240ESH	Ni 50~90u"UNDERPLATING, GOLD FLASH OVER ALL	
ITEM	Part Name	Q'TY	MATERIAL	FINISH	REMARK

TOLERANCE UNLESS SPECIFIED		UNITS: mm	NAME(INTENDED USE)	深圳市文章济美科技有限公司		
LINEAR	ANGLE	MAT'L:	0.4MM BTB 2.5H Female Conn			
.X ± 0.25	X° XX	SEE NOTES	PART NO.(INTENDED USE)	TITLE:		
.XX ± 0.15	.X° XX	SEE NOTES	BF04**250*	0.4MM BTB 2.5H Female Conn		
.XXX ± 0.10	.XX° XX	SEE NOTES	APPD:	Customer Drawing		
		Weight:	CHKD:	DWG NO.:		
			DR:P F	5001BF04002510-C		
				SCALE	SHEET	REV.
				5:1	1/1	A

REV.	ECN No.	DATE
c	ED-1108-003	2023.02.10

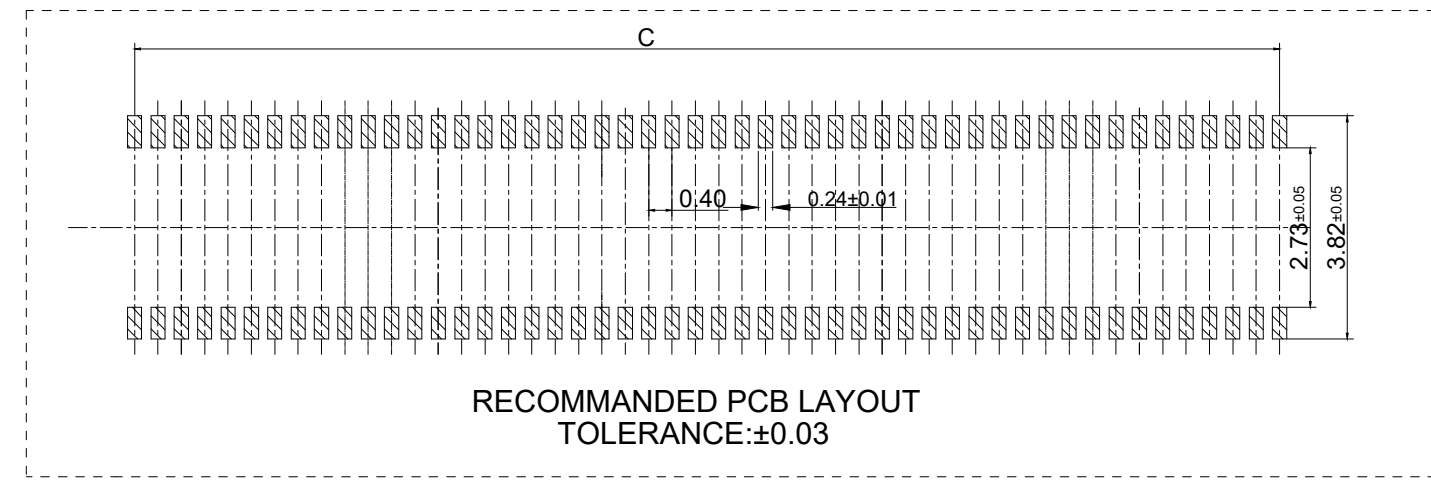


5001 B F 04 *** 30 **

Company
BTB Conn:Female
Series
Position Number:***Pin
Mate Height:3.0mm
Plating

- NOTES -

- MATERIAL SEE TABLE;
- ELECTRICAL PERFORMANCES:
 - 2-1.RATED CURRENT:0.5A;
 - 2-2.CONTACT RESISTANCE: 90 mQ Max. with AC 20mV, 1kHz and 1mA
 - 2-3.INSULATION RESISTANCE: 50MQ min. with DC 100v
- MECHANICAL PERFORMANCES:
 - 3-1.DURABILITY:30 CYCLES;
 - 3-2.OPERATION TEMPERATURE:-35° TO +85°;

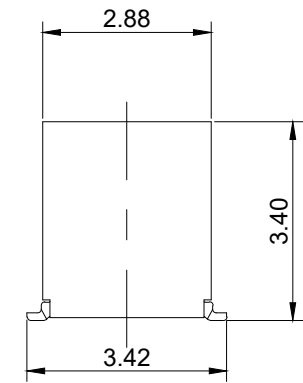
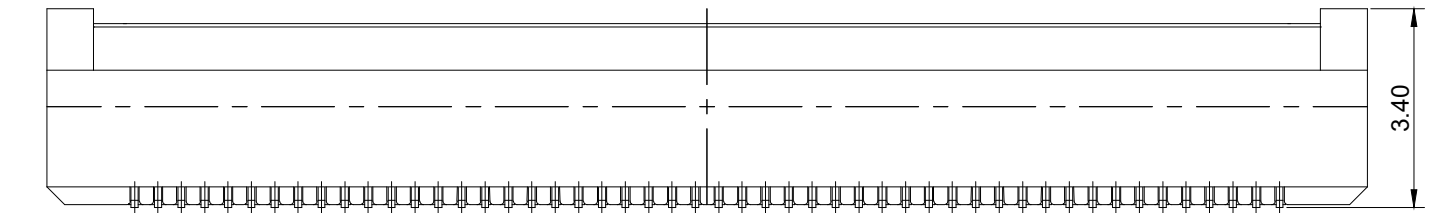
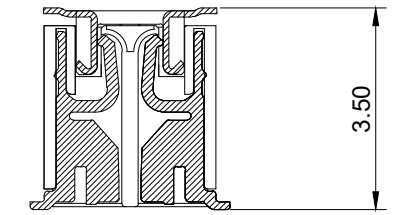
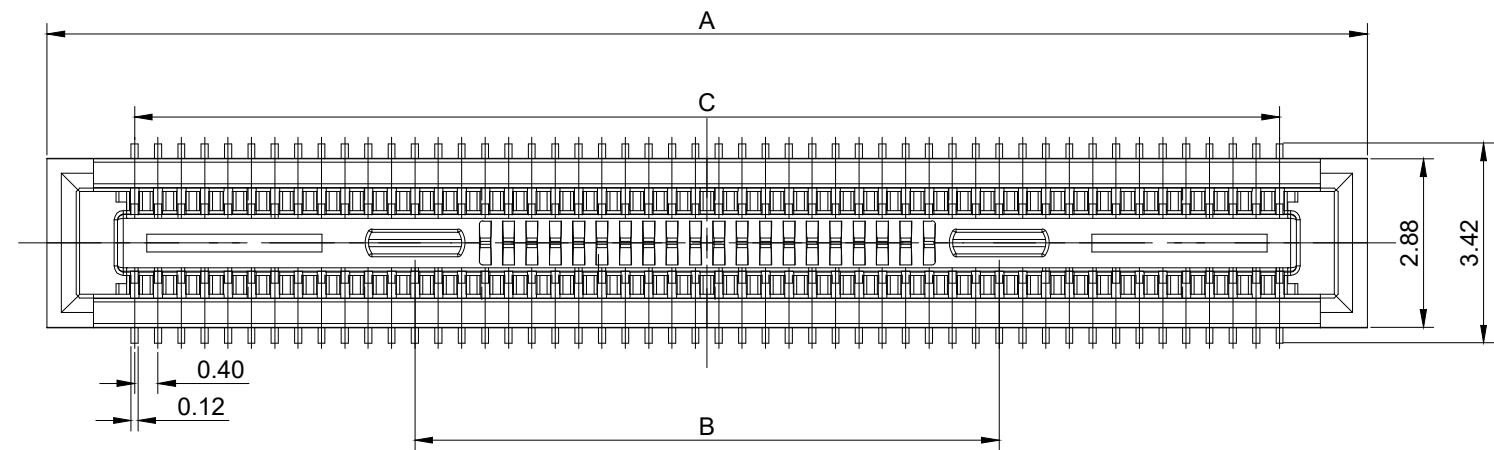


PIN	10	12	20	24	30	34	40	44	50	60	70	80	90	100	120
A	4.60	5.00	6.60	7.40	8.60	9.40	10.60	11.40	12.60	14.60	16.60	18.60	20.60	22.60	26.60
B	-	-	1.93	2.43	3.18	3.68	5.08	5.86	5.50	6.00	7.00	8.00	9.00	10.00	14.00
C	1.60	2.00	3.60	4.40	5.60	6.40	7.60	8.40	9.60	11.60	13.60	15.60	17.60	19.60	23.60

2	Housing	1	LCP	Glass:30%	Black
1	Terminal	N	C5240ESH	Ni 50~90u"UNDERPLATING, GOLD FLASH OVER ALL	
ITEM	Part Name	Q'TY	MATERIAL	FINISH	REMARK

TOLERANCE UNLESS SPECIFIED		UNITS: mm	NAME(INTENDED USE)	深圳市文章济美科技有限公司		
LINEAR	ANGLE	MAT'L:	0.4MM BTB 3.0H Female Conn			
.X ± 0.25	X° XX	SEE NOTES	PART NO.(INTENDED USE)	TITLE:		
.XX ± 0.15	.X° XX	SEE NOTES	BF04**300*	0.4MM BTB 3.0H Female Conn		
.XXX ± 0.10	.XX° XX	SEE NOTES	APPD:	Customer Drawing		
		Weight:	CHKD:	DWG NO.:		
			DR:P F	5001BF04003010-C		
				SCALE	SHEET	REV.
				5:1	1/1	A

REV.	ECN No.	DATE
c	ED-1108-003	2023.02.10

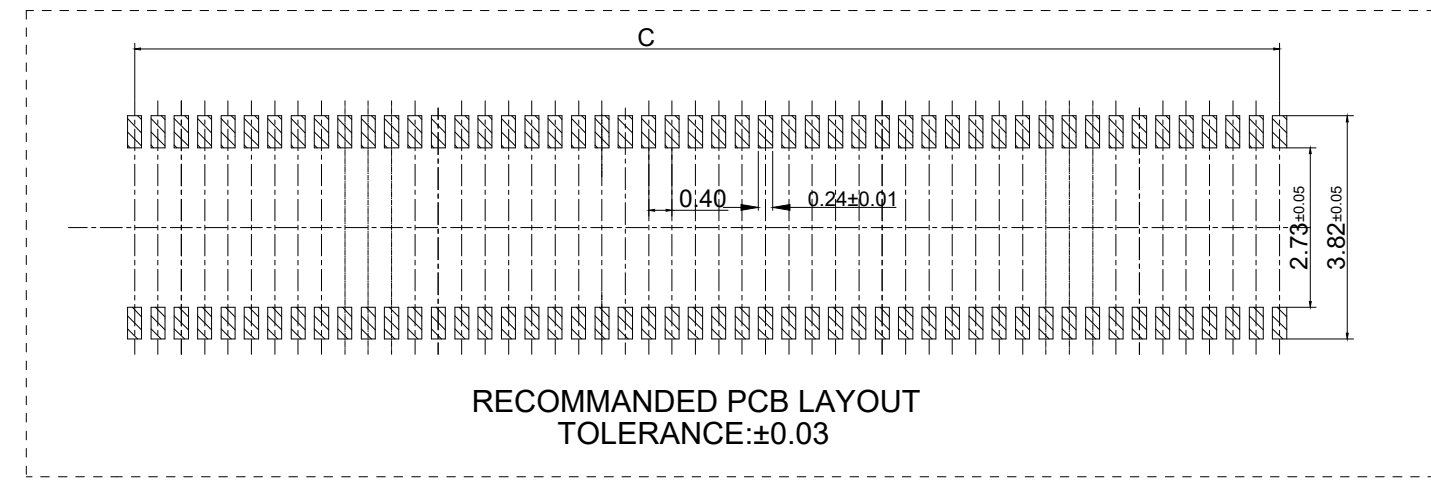


5001 B F 04 *** 35 **

Company
BTB Conn:Female
Series
Position Number:***Pin
Mate Height:3.5mm
Plating

- NOTES -

- MATERIAL SEE TABLE;
- ELECTRICAL PERFORMANCES:
 - 2-1.RATED CURRENT:0.5A;
 - 2-2.CONTACT RESISTANCE: 90 mQ Max. with AC 20mV, 1kHz and 1mA
 - 2-3.INSULATION RESISTANCE: 50MQ min. with DC 100v
- MECHANICAL PERFORMANCES:
 - 3-1.DURABILITY:30 CYCLES;
 - 3-2.OPERATION TEMPERATURE:-35° TO +85°;

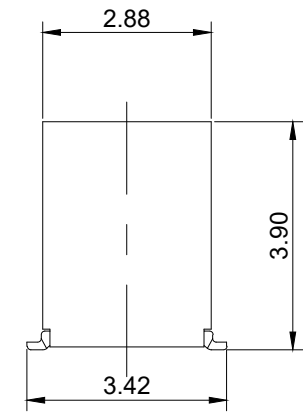
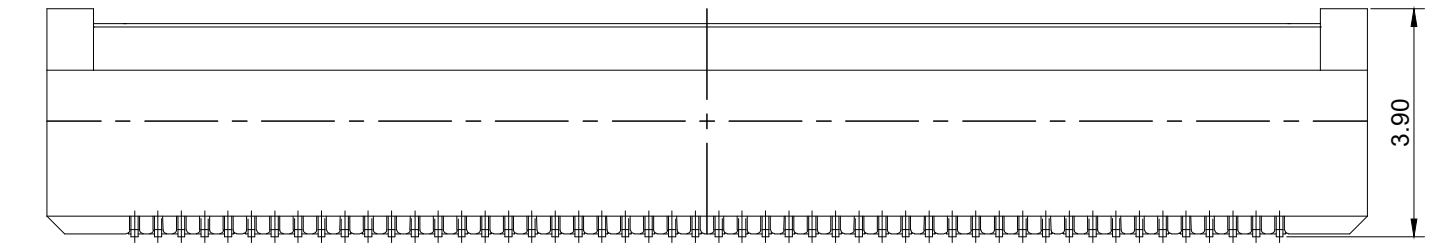
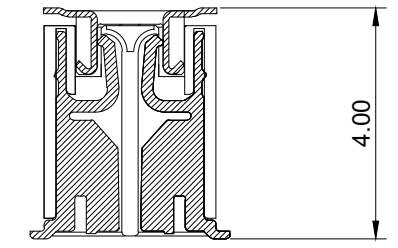
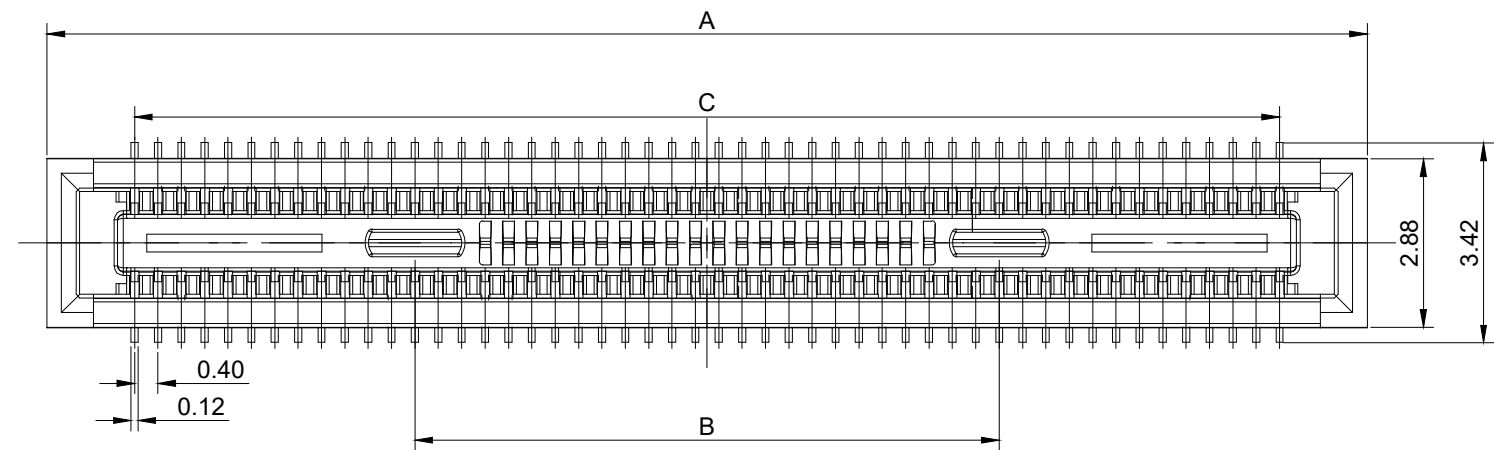


PIN	10	12	20	24	30	34	40	44	50	60	70	80	90	100	120
A	4.60	5.00	6.60	7.40	8.60	9.40	10.60	11.40	12.60	14.60	16.60	18.60	20.60	22.60	26.60
B	-	-	1.93	2.43	3.18	3.68	5.08	5.86	5.50	6.00	7.00	8.00	9.00	10.00	14.00
C	1.60	2.00	3.60	4.40	5.60	6.40	7.60	8.40	9.60	11.60	13.60	15.60	17.60	19.60	23.60

2	Housing	1	LCP	Glass:30%	Black
1	Terminal	N	C5240ESH	Ni 50~90u"UNDERPLATING, GOLD FLASH OVER ALL	
ITEM	Part Name	Q'TY	MATERIAL	FINISH	REMARK

TOLERANCE UNLESS SPECIFIED		UNITS: mm	NAME(INTENDED USE)	深圳市文章济美科技有限公司		
LINEAR	ANGLE	MAT'L:	0.4MM BTB 3.5H Female Conn			
.X ± 0.25	X° XX	SEE NOTES	PART NO.(INTENDED USE)	TITLE:		
.XX ± 0.15	.X° XX	FINISH:	BF04**350*	0.4MM BTB 3.5H Female Conn		
.XXX ± 0.10	.XX° XX	SEE NOTES	APPD:	Customer Drawing		
		Weight:	CHKD:	DWG NO.:		
			DR:P F	5001BF04003510-C		
				SCALE	SHEET	REV.
				5:1	1/1	A

REV.	ECN No.	DATE
c	ED-1108-003	2023.02.10

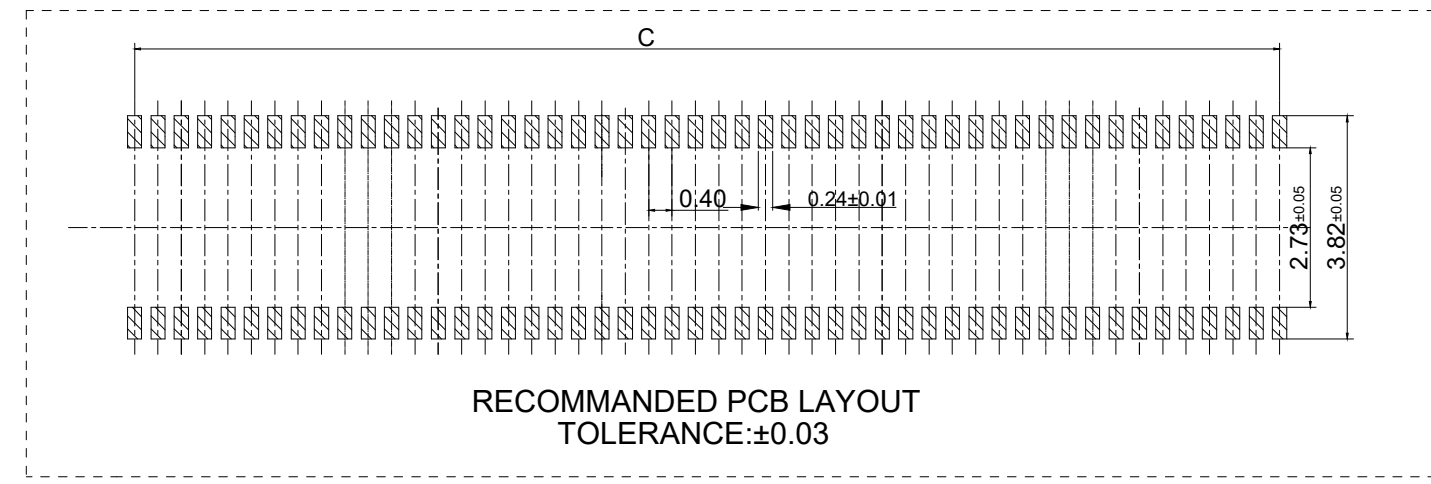


5001 B F 04 *** 40 **

Company
BTB Conn:Female
Series
Position Number:***Pin
Mate Height:4.0mm
Plating

- NOTES -

1. MATERIAL SEE TABLE;
2. ELECTRICAL PERFORMANCES:
 - 2-1.RATED CURRENT:0.5A;
 - 2-2.CONTACT RESISTANCE: 90 mQ Max. with AC 20mV, 1kHz and 1mA
 - 2-3.INSULATION RESISTANCE: 50MQ min. with DC 100v
3. MECHANICAL PERFORMANCES:
 - 3-1.DURABILITY:30 CYCLES;
 - 3-2.OPERATION TEMPERATURE:-35° TO +85°;



PIN	10	12	20	24	30	34	40	44	50	60	70	80	90	100	120
A	4.60	5.00	6.60	7.40	8.60	9.40	10.60	11.40	12.60	14.60	16.60	18.60	20.60	22.60	26.60
B	-	-	1.93	2.43	3.18	3.68	5.08	5.86	5.50	6.00	7.00	8.00	9.00	10.00	14.00
C	1.60	2.00	3.60	4.40	5.60	6.40	7.60	8.40	9.60	11.60	13.60	15.60	17.60	19.60	23.60

2	Housing	1	LCP	Glass:30%	Black
1	Terminal	N	C5240ESH	Ni 50~90u"UNDERPLATING, GOLD FLASH OVER ALL	
ITEM	Part Name	Q'TY	MATERIAL	FINISH	REMARK

TOLERANCE UNLESS SPECIFIED		UNITS: mm	NAME(INTENDED USE)	深圳市文章济美科技有限公司		
LINEAR	ANGLE	MAT'L:	0.4MM BTB 4.0H Female Conn			
.X ± 0.25	X° XX	SEE NOTES	PART NO.(INTENDED USE)	TITLE:		
.XX ± 0.15	.X° XX	FINISH:	BF04**400*	0.4MM BTB 4.0H Female Conn		
.XXX ± 0.10	.XX° XX	SEE NOTES	APPD:	Customer Drawing		
		Weight:	CHKD:	DWG NO.:		
			DR:P F	5001BF04004010-C		
				SCALE	SHEET	REV.
				5:1	1/1	A