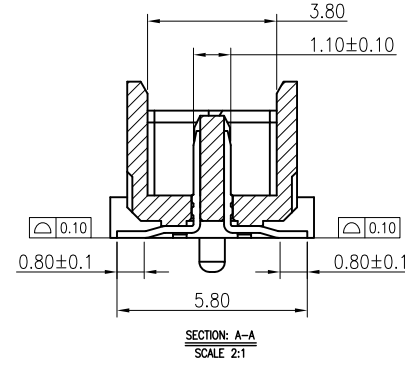
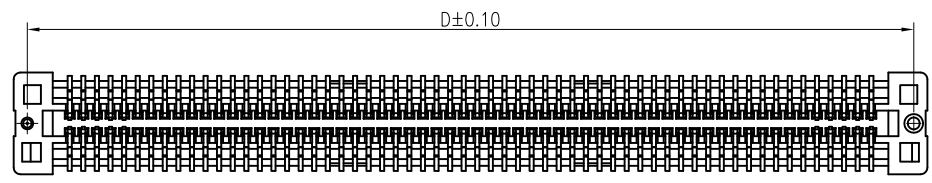
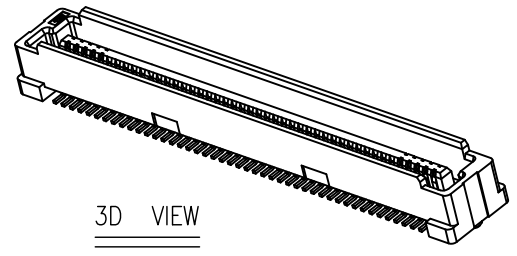
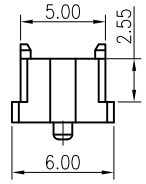
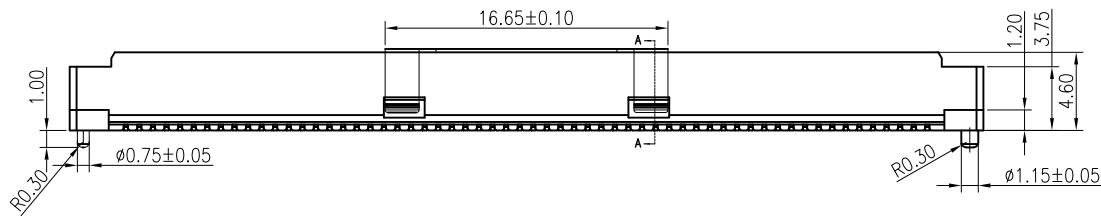


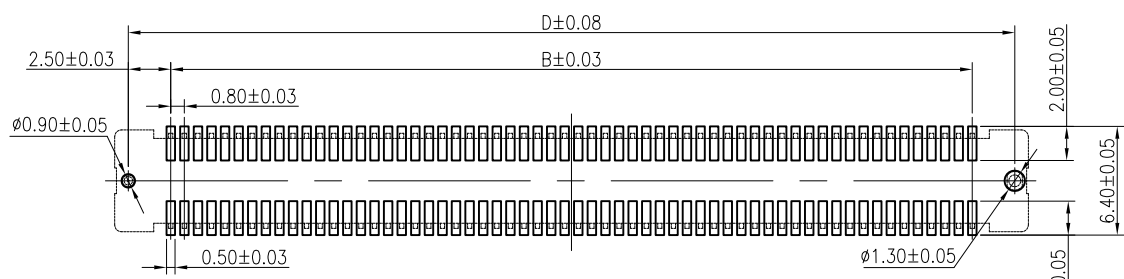
NOTES:

- 1.HUOSING: LCP HIGH-TEMP THERMOPLASTIC UL94V-0 COLOR:BEIGE
- 2.TERMINAL:PHOSPHOR BRONZE
- 3.CODING INFORMATION: 5001-BAP 0838- ** M R

PACKING: R: REEL
 MALE
 PIN
 MATING HEIGHT: 38-3.8H
 0.8BTB
 JM CONN BTB CONNECTOR SERIES



NO.of contacts	Dimensions					
	A	B	C	D	E	F
40	21.80	15.20	16.80	20.20	18.86	20.21
50	25.80	19.20	20.80	24.20	22.86	24.21
60	29.80	23.20	24.80	28.20	26.86	28.21
80	37.80	31.20	32.80	36.20	34.86	36.21
100	45.80	39.20	40.80	44.20	42.86	44.21
120	53.80	47.20	48.80	52.20	50.86	52.21
140	61.80	55.20	46.80	60.20	58.86	60.21
160	69.80	63.20	64.80	68.20	66.86	68.21
180	77.80	71.20	72.80	76.20	74.86	76.21
200	85.80	79.20	80.80	84.20	82.86	84.21



RECOMMENDED P.C.BOARD LAYOUT

深圳市文章济美科技有限公司

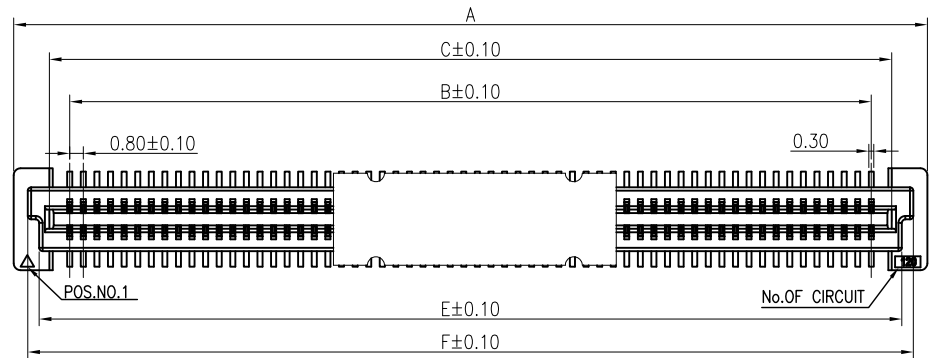


修订 SER	修改摘要 REVISION DESCRIPTION	签名 SIGNATURE	日期 DATE

一般公差 GENERAL TOLERANCE	
.X	±0.25
.XX	±0.20
.XXX	±0.10
ANGLES	±1°

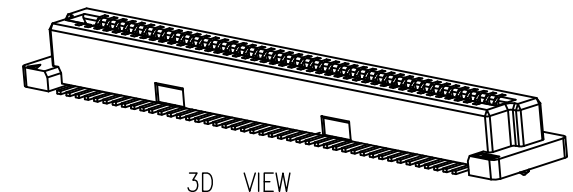
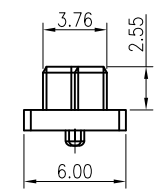
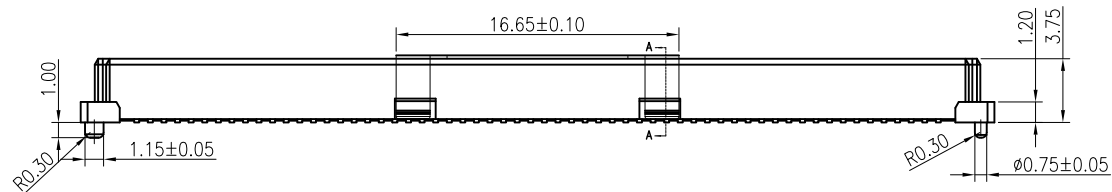
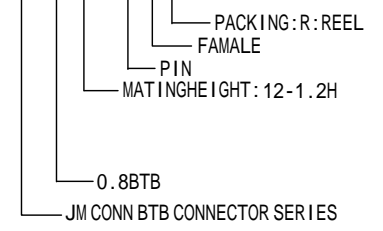
制图 (DR):	Kavin 2017.07.19	品名(TITLE):	0.8mm PITCH BTB CONNECTOR PLUG ASSEMBLY 5.0H TYPE						
审核 (CHKD):		料号(PART NO):	5001-BAP0838- **MR						
核准 (APPD):		比例(SCALE):	1:8	单位(UNITS):	mm	张数(SHEET):	1 OF 1	图幅(SIZE):	A4



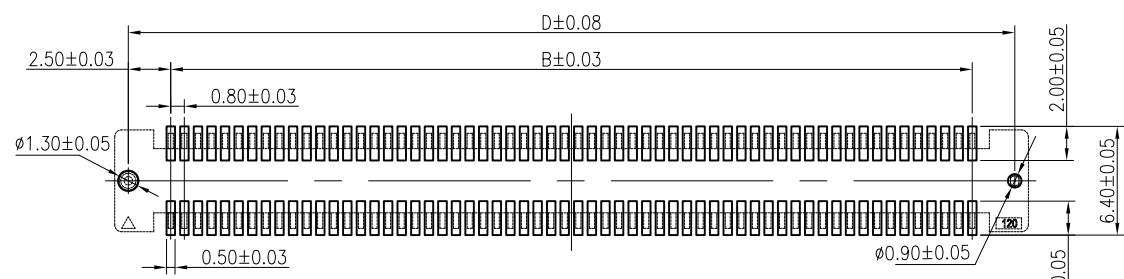
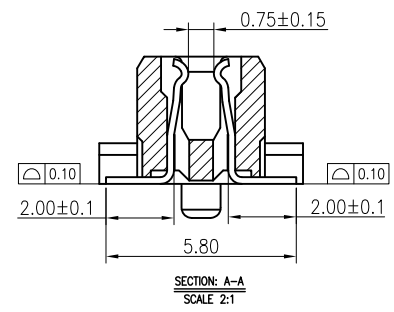
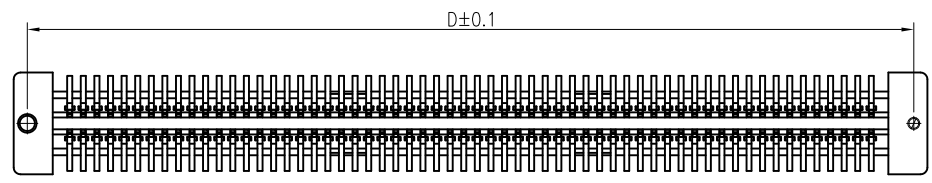


NOTES:

- 1.HUOSING: LCP HIGH-TEMP THERMOPLASTIC UL94V-0 COLOR:BEIGE
- 2.TERMINAL:PHOSPHOR BRONZE
- 3.CODING INFORMATION: 5001-BAP 0812-**FR



3D VIEW



RECOMMENDED P.C.BOARD LAYOUT

NO.of contacts	Dimensions					
	A	B	C	D	E	F
40	21.80	15.20	17.60	20.20	18.80	20.15
50	25.80	19.20	21.60	24.20	22.80	24.15
60	29.80	23.20	25.60	28.20	26.80	28.15
80	37.80	31.20	33.60	36.20	34.80	36.15
100	45.80	39.20	41.60	44.20	42.80	44.15
120	53.80	47.20	49.60	52.20	50.80	52.15
140	61.80	55.20	57.60	60.20	58.80	60.15
160	69.80	63.20	65.60	68.20	66.80	68.15
180	77.80	71.20	73.60	76.20	74.80	76.15
200	85.80	79.20	81.60	84.20	82.80	84.15

深圳市文章济美科技有限公司

制图 (DR):	Kavin 2017.07.19	品名(TITLE):	0.8mm PITCH BTB CONNECTOR RECEPTACLE ASSEMBLY 5.0H TYPE						
审核 (CHKD):		料号(PART NO):	5001-BAP0812-**FR						
核准 (APPD):		比例(SCALE):	1:8	单位(UNITS):	mm	张数(SHEET):	1 OF 1	图幅(SIZE):	A4



修订 (REV)	修改摘要 (REVISION DESCRIPTION)	签名 (SIGNATURE)	日期 (DATE)

一般公差
GENERAL TOLERANCE
.X ±0.25
.XX ±0.20
.XXX ±0.10
ANGLES ±1°