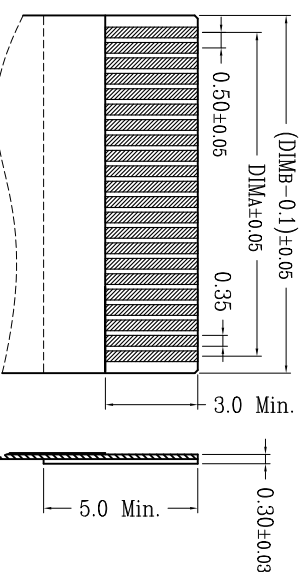
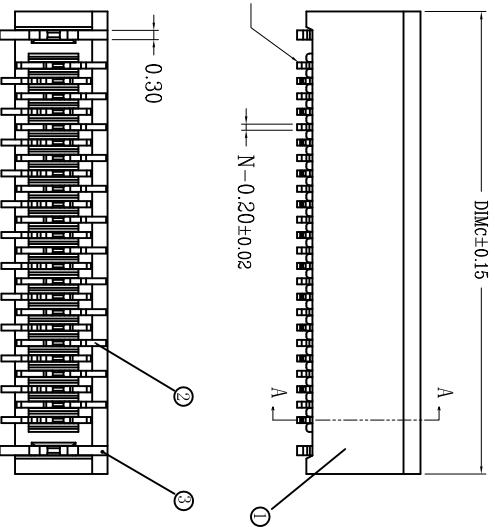
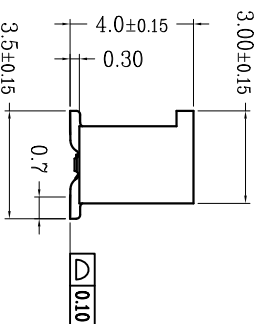
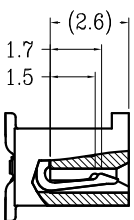
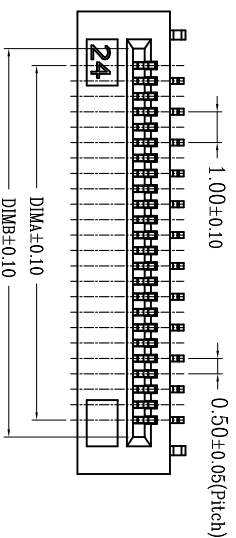
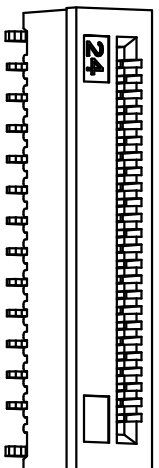
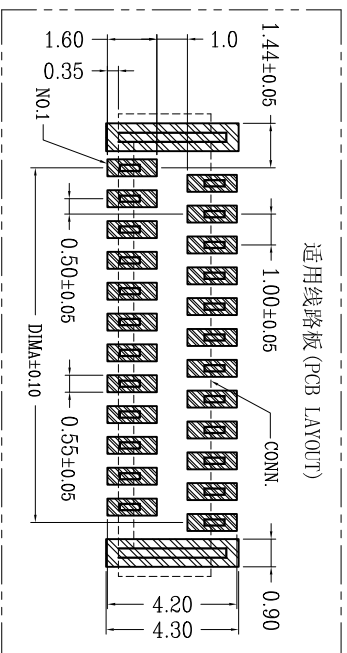


序号	品名	材质
①	0.5无盖立式拨态(DH. 0)	LCP UL94V-0 本色
②	0.5无盖立式端子(DH. 0)	铜合金/表面镀锡
③	0.5无盖立式焊片(DH. 0)	铜合金/表面镀锡



适用扁平线 (Applicable Flat Cable)



适用线路板 (PCB LAYOUT)

- 技术指标:
1. 塑件表面应光洁、无毛边、无明显收缩、缺陷、裂纹等现象。
 2. 温度范围: $-25^{\circ}\text{C} \sim +85^{\circ}\text{C}$ 。
 3. 额定电压: 50V, AC/DC(等效)。
 4. 接触电阻: $\leq 0.03\Omega$ 。
 5. 绝缘电阻: $\geq 500\text{M}\Omega$ 。
 6. 产品料号:

5001-FMS_05_40-**-R1
 JMIFPC CONNECTOR SERIES
 PITCH: 0.5
 HIGH: 4.0
 ALTERNATE
 PACKING: R: 卷; T: 管
 PIN

CKT	A	B	C	CKT	A	B	C
4	1.5	2.6	5.0	33	16.0	17.1	19.5
5	2.0	3.1	5.5	34	16.5	17.6	20.0
6	2.5	3.6	6.0	35	17.0	18.1	20.5
7	3.0	4.1	6.5	36	17.5	18.6	21.0
8	3.5	4.6	7.0	37	18.0	19.1	21.5
9	4.0	5.1	7.5	38	18.5	19.6	22.0
10	4.5	5.6	8.0	39	19.0	20.1	22.5
11	5.0	6.1	8.5	40	19.5	20.6	23.0
12	5.5	6.6	9.0	41	20.0	21.1	23.5
13	6.0	7.1	9.5	42	20.5	21.6	24.0
14	6.5	7.6	10.0	43	21.0	22.1	24.5
15	7.0	8.1	10.5	44	21.5	22.6	25.0
16	7.5	8.6	11.0	45	22.0	23.1	25.5
17	8.0	9.1	11.5	46	22.5	23.6	26.0
18	8.5	9.6	12.0	47	23.0	24.1	26.5
19	9.0	10.1	12.5	48	23.5	24.6	27.0
20	9.5	10.6	13.0	49	24.0	25.1	27.5
21	10.0	11.1	13.5	50	24.5	25.6	28.0
22	10.5	11.6	14.0	51	25.0	26.1	28.5
23	11.0	12.1	14.5	52	25.5	26.6	29.0
24	11.5	12.6	15.0	53	26.0	27.1	29.5
25	12.0	13.1	15.5	54	26.5	27.6	30.0
26	12.5	13.6	16.0	55	27.0	28.1	30.5
27	13.0	14.1	16.5	56	27.5	28.6	31.0
28	13.5	14.6	17.0	57	28.0	29.1	31.5
29	14.0	15.1	17.5	58	28.5	29.6	32.0
30	14.5	15.6	18.0	59	29.0	30.1	32.5
31	15.0	16.1	18.5	60	29.5	30.6	33.0
32	15.5	16.6	19.0				

深圳市文章济美科技有限公司



一般公差 (TOLERANCE)
 X ±.50 XX ±.10
 X ±.20 XXX ±.05
 ANGLES ±°

品名 (NAME)	0.5 Pitch无盖立式正脚位 (H=4.0)	料号 (DRAWING)	5001-FMS0540-**-R1-00
比例 (SCALE)	1:1	单位 (UNITS)	mm
张数 (SHEET)	1	审核 (APPRO)	黄志明
校对 (CHECK)	王涛	制图 (DRA)	Anlan