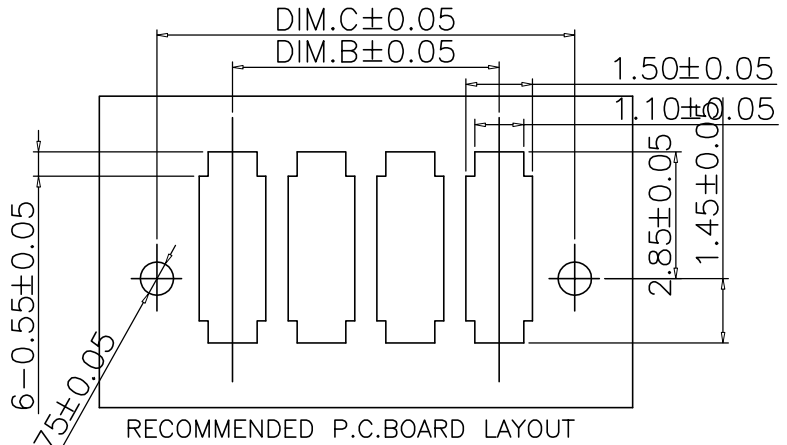
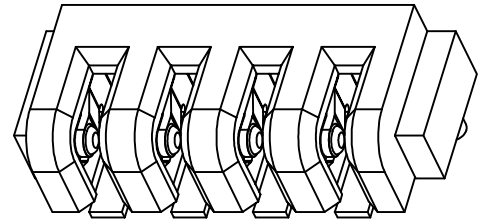
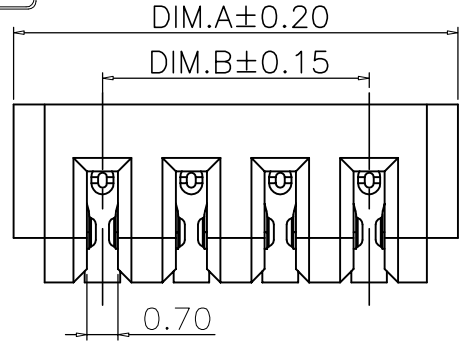


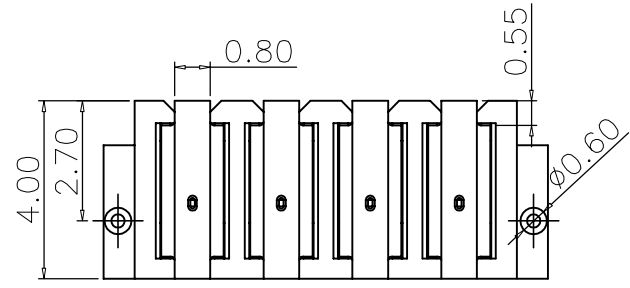
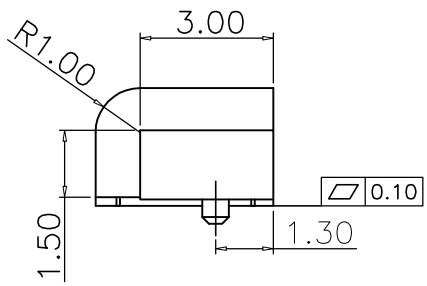
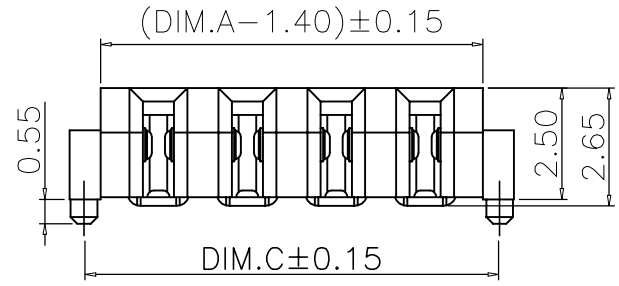
RoHS
Compliant

结构图面

REV	DESCRIPTION	APPR	CHECK	DRAW	DATE
△	原始图档				080606



RECOMMENDED P.C.BOARD LAYOUT



P / N	Dim. A	Dim. B	Dim. C
02pin	6.00	2.00	5.35
03pin	8.00	4.00	7.35
04pin	10.00	6.00	9.35
05pin	12.00	8.00	11.35
06pin	14.00	10.00	13.35
07pin	16.00	12.00	15.35
08pin	18.00	14.00	17.35

- 备注:
- 1.额定电流: 3.0A (单PIN)
 - 2.额定电压: 30V(Max) AC/DC;
 - 3.绝缘耐压: AC 1KV 1分钟相邻端子间无损坏
 - 4.绝缘阻抗: 1000MΩ, 500V DC/1分钟相邻端子间无损坏
 - 5.使用温度: -40℃~+85℃
 - 6.主体材质: LCP/PA9T黑色/耐温260° ±5°
 - 7.五金材质: 磷铜镀金 (T=0.20mm)

QUALITY SYMBOLS	GENERAL TOLERANCES (UNLESS SPECIFIED)		SCALE: 1:1	NUMBER:	深圳市文章济美科技有限公司 TITLE: Battery PH2.0 H=2.5mm母座
	MM	INCH	MATERIAL:	HRC:	
	.X ±0.25 .X @----		DRAWN BY	DATE	
	.XX ±0.15 .XX @----		CHECKED BY	DATE	
.XXX ±0.05 .XXX @----		APPROVED BY	DATE	PART NO.	DWG NO.
▽ _{r0}	ANGULAR ±1°		THIRD ANGLE PROJECTION		REVISE ON CAD ONLY
▽ _c	DRAFT WHERE APPLICABLE MUST REMAIN WITHIN DIMENSIONS		SHEET NO. 1/1		